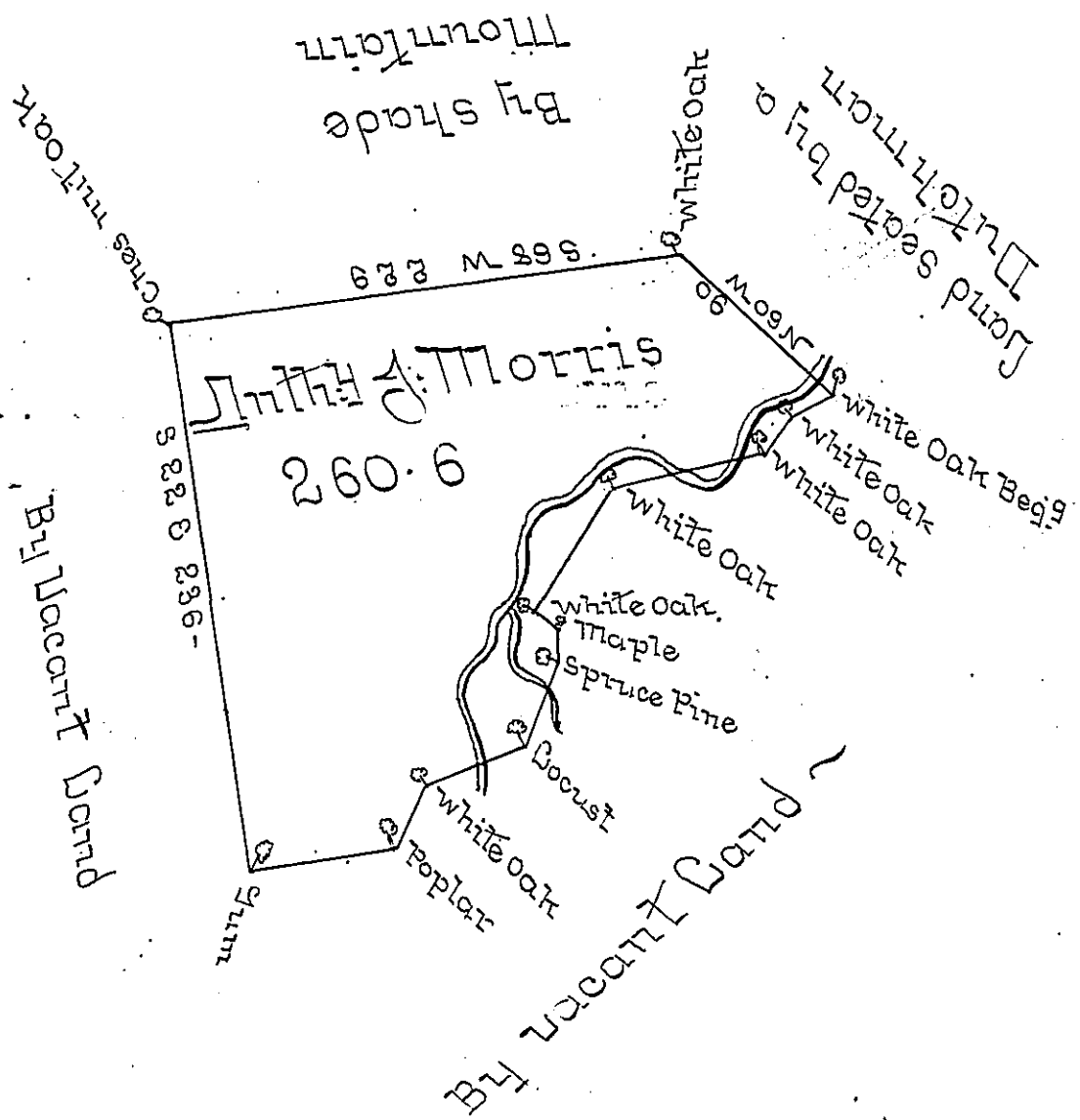


Courses and Distances
 from the Gum

- N 66 E 68 Poplar
- N 17 E 27 White Oak
- N 53 E 45 Locust
- N 17 E 39 Spruce Pine
- N 16 W 13 Maple
- N 59 W 8 1/2 White Oak.
- N 16 E 64 White Oak.
- N 64 E 68 White Oak
- N 24 E 16 White Oak
- N 36 E 20 To Beg.



The Draught of a Tract of Land called
 situate at the Foot of the Shade Mountain on the
 Waters of Lost Creek in the County of Cumberland
 containing Two hundred Sixty Acres 114 ^{Perches} ~~Acres~~ with
 usual Allowance. Surveyed the ~~5th day of May Anno~~
~~Dom. 1770~~ 24th day of October Anno Dom. 1770 in Pursu-
 ance of an Order of Survey to Anthony James Morris
 Dated at Philad^a the 8th day of May Anno Dom.
 1767 No 3635 -

p

Wm McClary

To John Bukens Esq: S. Y. }
 of Pennsylvania }

IN TESTIMONY that the above is a copy of the original remaining on file in the
 Department of Internal Affairs of Pennsylvania, made con-
 formably to an Act of Assembly approved the 16th day of
 February, 1833, I have hereunto set my Hand and caused
 the Seal of said Department to be affixed at Harrisburg, this

— first — day of — June — 1897 —

James L. [Signature]
 Secretary of Internal Affairs.